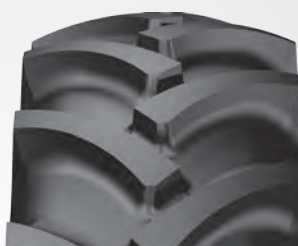


TR-60 (I-3)

TR-60 (I-3) tire designed for heavy duty tractor applications. Reinforced carcass structure provides exceptional durability and ensures longevity. Features excellent self-cleaning properties and outstanding grip in challenging off the road conditions. The tread pattern provides excellent stability during operations.



TIRESIZE	PR	TT/TL	LOAD INDEX		SPEED SYMBOL	RIM		INFLATED DIMENSIONS (NO LOAD)		INFLATED DIMENSIONS (W/LOAD)		TREAD DEPTH (MM)	INFLATING PRESSURE (psi/bar)	LOAD CAPACITY PER TIRE (FREE ROLLING SPEED, KM/H)	LOAD CAPACITY PER TIRE (DRIVE WHEEL SPEED, KM/H)
			FREE ROLLING (KG)	DRIVE WHEEL (KG)		RECOM. (INCHES)	PERMITTED (INCHES)	OUTER DIAMETER (MM)	SECTION WIDTH (MM)	STATIC LOADED RADIUS (MM)	DYNAMIC RADIUS CIRCLE (MM)			40	40
15.5/80-24	12	TL	157	145	A8	W12	W13, W14L	1262	394	573	3660	34	43	4125	2900
15.5/80-24	16	TL	163	151	A8	W12	W13, W14L	1262	394	573	3660	34	58	4875	3450

